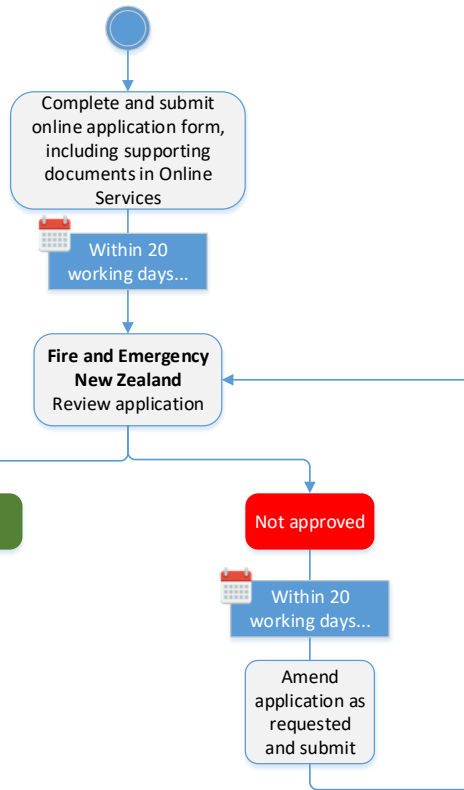


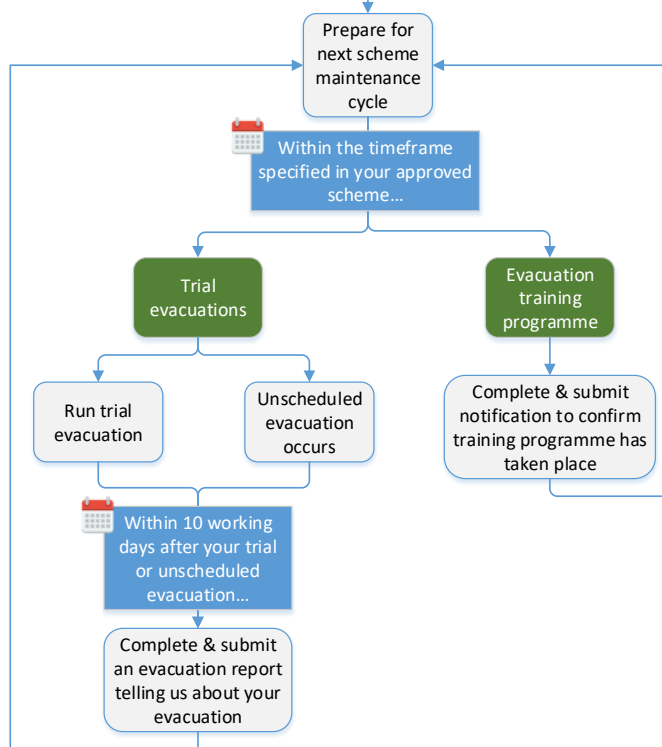
## Apply for your evacuation scheme



As part of your application, you will nominate either regular trial evacuations or a regular training programme, and the timeframe for how often this will be completed (maximum of six monthly)

**Note:** If you are unable to complete an online application, there is a manual form available.

## Maintain your evacuation scheme



You must also advise Fire and Emergency New Zealand of:

- updates to contact details
- building events as outlined in Section 7 of your approved evacuation scheme
- an alternative contact person when the nominated contact person is absent from New Zealand for more than 21 consecutive days